



# Shrove Tuesday—or Pancake Day?!?

The last three days before the beginning of Lent is known as Shrove-tide. The old names for these days were: 1) Quinquagesima Sunday—Shrove Sunday, the fiftieth day before Easter; 2) Collop Monday—Shrove Monday, named after the traditional dish of the day....collops of bacon served with eggs. In addition to providing little meat, the collops were also the source of the fat for the following day’s pancakes, and 3) Pancake Day—Shrove Tuesday, the day on which all fats and cream had to be used up.

Shrove Tuesday is one of the moveable feasts in the church calendar and is directly related to the date on which Easter falls. Shrove Tuesday always falls 47 days before Easter Sunday so the date varies from year to year and falls between February 3 and March 9. The word shrove is past tense of the English verb “shrive”, which means to obtain absolution for one’s sins by confessing and doing penance. Shrove Tuesday gets its name

from the shriving (confessing) that English Christians were expected to do prior to receiving absolution immediately before Lent began. Shrove Tuesday is a day of celebration, as well as penitence, because it’s the last day before Lent. Lent is a time of abstinence, of giving things up. So Shrove Tuesday is the last chance to indulge yourself, and to use up the foods that aren’t allowed in Lent. [Continued on Page 3](#)

**Inside this issue:**

Lectio Divina Moved	2
Church Staff and Vestry Members	2
Vestry Highlights	6
Happenings	10
Financial Update	13
Birthdays and Anniversaries	14
Calendar	15

**Special points of interest:**

- *Ash Wednesday*
- *Look Who’s Driving*
- *Vestry Members*
- *Pancake Supper*

# Check This Out!!!

JOIN THE THEOLOGICAL INQUIRY CLASS LED BY FR. MARK USING FREDERICK BUECHNER'S BOOK "**WISHFUL THINKING: A THEOLOGICAL ABC**". THE CLASS IS HELD IN STEWART LOUNGE (IN ST. MARK'S) BETWEEN SUNDAY SERVICES FROM 9:00 TO 10:00.



*Ash Wednesday—February 22nd*

*Services at 10 AM and 7 PM*

## Beef Neck Bones

**EChO has plenty of smoked and unsmoked beef neck bones available for the taking. Please contact Mary Haave if you have an interest in any of these flavorful additions for a soup or other recipe!**

***Lectio Divina will NOT be held on the usual day (1st Saturday of the month). It will be held on Saturday, February 11th.***

### Church of the Transfiguration Staff and Vestry

Priest in Charge - The Rev. Mark Norris  
marknorris@juno.com  
303-674-4904 ext. 11  
Parish Administrator—Jerri Avery,  
303-674-4904  
Organist & Choir Director—Bob Coursen,  
303-674-4904  
Director of Children's Ministries—Janet Reznik, 303-674-9253  
Building & Grounds Administrator—  
Ken Schmidt, 303-598-6128

### Office Hours

Monday 1-5  
Tuesday 10-5  
Wednesday 12-7  
Thursday 10-5  
cotransfig@gmail.com  
www.church-transfig.net  
www.colorado-weddings.org

### 2012 Vestry

Co- Senior Wardens: David Black & Randy Reznik  
Junior Warden—Emil Gaden  
Mary Hatfield  
Dawn Barr  
Stephanie Harris  
Treasurer—Steven Peters  
Vestry Clerk—open

## Shrove Tuesday, continued

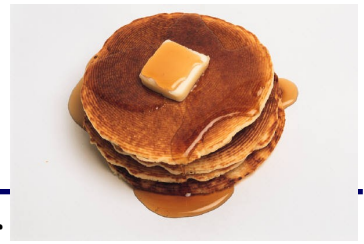
In the old days there were many foods that observant Christians would not eat during Lent: foods such as meat and fish, fats, eggs, and dairy products. So that no food was wasted, families would have a feast on the shroving Tuesday, and eat up all the foods that wouldn't last the forty days of Lent without spoiling. The need to eat up the fat gave rise to the French name Mardi Gras ("Fat Tuesday"). Pancakes became associated with Shrove Tuesday, as they were a dish that could use up all the eggs, fats and milk in the house with just the addition of flour.

Shrovetide was celebrated with games, sports, dancing and other

revelries. There were feasts to use up the food that could not be eaten during the Lenten fast. Football was played in the streets and Nickanan Night (as Shrove Monday evening was called in Cornwall) was a time for boys to run riot in the villages; hiding gates, taking off doorknockers, and making off with anything that householders had forgotten to lock away. The origin of pancake racing is thought to have been in Olney, 1445. A woman from Olney had lost track of the time on Shrove Tuesday, and was busy cooking pancakes in her kitchen. Suddenly she heard the church bell ringing to call the faithful to church for confession. The woman raced out of

her house and ran all the way to church still holding her frying pan and wearing her apron. On Pancake Day, pancake races are held in villages and towns across the United Kingdom. In 1634 William Fennor wrote in his *Palynodia*: "And tosse their pancakes up for feare they burne." The contestants, traditionally women, carry a frying pan and race to the finish line tossing the pancakes as they go. As the pancakes are thin, skill is required to toss them successfully while running. The winner is the first to cross the line having tossed the pancake a certain number of times.

[www.emmanuelgv.org](http://www.emmanuelgv.org)



## Ash Wednesday

In the Western Church, Ash Wednesday is the first day of

Lent, the 40-day period of fasting before Easter. On Ash Wednesday, ashes are blessed, mixed with either holy oil or water, and placed upon the head with the sign of the

cross, or sprinkled on the forehead. The ashes are made from burning palm branches blessed the previous year on Palm Sunday. When the priest imposes the ashes he





## Ash Wednesday, continued

---

says either "remember man you are dust, and to dust you will return" (see Genesis 3:19), or "turn away from sin and be faithful to the Gospel" (Mark 1:15).

The ashes serve a dual purpose. First, as the above words imply, we are reminded of our mortality and humanity as we begin the Lenten Fast. Second, the ashes are a Biblical symbol of repentance, sorrow, and humility. There are many cases in the Scriptures of wearing ashes as a sign of penitence, often while wearing sackcloth. In 2 Samuel 13:19, Tamar puts on ashes and tears her clothes as a sign of sadness and repentance. In Esther 4:1-3, after learning of the king's decree to kill all Jews, Mordecai tears his garments, and puts on sackcloth and ashes. His fellow Jews do the same thing, as well as beginning to fast. The prophet Jeremiah (6:26) urges his readers to "gird on sackcloth and roll in ashes."

Fasting is a major component of Ash Wednesday, and Ash Wednesday is an official fast day of the Church, along with Good Friday. Fasting has a long history in the Church. In Acts 13:1-3, it was while "worshipping the Lord and fasting" that the Holy Spirit led the Apostles to set apart Paul and Barnabas for their work. In Matthew 9:14, Jesus assumes that after he leaves the earth his followers *will* fast. The history of the Church is filled with stories of fasting and its spiritual value. However, Jesus warns us not to be obvious about our fasting, or only fasting to impress others. Thus, Ash Wednesday is based on the biblical concept of repentance, and the ashes and fasting that are associated with repentance.

Ash Wednesday is not a holiday in the Eastern Church, and developed only in the West. Orthodox Churches begin Lent on a Monday, known as "Clean Monday." Ash

Wednesday as an official fast day dates to at least the 8th century, since it appears in the Gregorian Sacramentary from that period. Originally, Lent began on a Sunday. However, in order to bring the number of days of Lent to 40 (the days Jesus fasted in the wilderness), the beginning of Lent was eventually transferred to a Wednesday.

Originally, Ash Wednesday was the day when public penitents in Rome began their penance. Recall that in the early Church, penance was often public and protracted. It was only later that private confession and penance began, for pastoral reasons. When public penance gradually fell into disuse by the 8th century, Ash Wednesday became a day of penitence and fasting for all members of the Church.

<http://www.churchyear.net/ashwednesday.html>

# Look Who's Driving!!



Dylan & Charlie  
Losche at their  
Driver's Education  
Class



## Vestry Highlights

---



***Thank You!!!!***

Let's thank the 2011 Vestry for all of their hard work for the church!

2011 Retiring Vestry Members:

Dick Wilson—Senior Warden

Bill Braun—Treasurer

Wayne Grider—Member

Jane Wilson—Vestry Clerk

***2012 Vestry***

Meet the returning and new members of the 2012 Vestry

David Black & Randy Reznik—New Co - Senior Wardens

Emil Gadenken—Returning Junior Warden

Dawn Barr—Returning Member

Mary Hatfield—Returning Member

Steven Peters—New Treasurer

Stephanie Harris—Member

### January 23, 2012 Vestry Highlights

- Steven Peters was approved as the new Treasurer
- Discussed Shrove Tuesday Pancake Supper—integrated event with EDSE—games, piñata, King's Cake, arts & crafts.....PANCAKES

# WHY?????

---

[WHY didn't I get to vote for the new vestry members?](#) In a parish that is in imperiled status, the wardens and vestry report directly to the Bishop. The Bishop also reserves the right to appoint wardens, vestry members, and key ministry leaders and implement policies for the well-being of the congregation. This is to give the Bishop the pastoral and organizational latitude needed to promote recovery and renewal in the congregation.



[WHY is COT in imperiled status?](#) COT requested to be placed in imperiled status due to lack of funds to search for a new priest. Definition: In the event a parish experiences a decline in average Sunday attendance of twenty (20) percent or more over a three (3)-year period, or is unable to substantially perform its fiscal responsibilities over the course of one (1) year, including, but not limited to, (i) the ability to pay the rector's compensation, (ii) the ability to pay the rector's pension, or (iii) the ability to pay the mortgage, the rent, or any outstanding debts, then the Ecclesiastical Authority, with the advice of the Canon Missioner and the Standing Committee, may place the parish in "Imperiled Parish Status." When a parish is placed in Imperiled Parish Status, the parish, at the direction of the Ecclesiastical Authority, shall undertake an assessment process to discern an appropriate course of action, including, but not limited to, (i) intentional redevelopment, (ii) relocation, (iii) merging or partnering, or (iv) closing.

# SOUP'S ON, WELCOMES & CONGRATULATIONS!!!



## Soup Ministry

Homemade soups in the freezer are available for parishioners and friends that are sick, shut-in or need some TLC. Feel free to give soup to someone you see at church that is hurting, or take soup to someone you are going to visit. The soups are in the freezer on the east wall of the kitchen.



***Welcome to Susie, Jameson, and Brian Williams for transferring their membership to our Parish Family.***

***Congratulations to Grey Perry for his Baptism on 1/8/2012.***



Help make soup for the community.....COT makes soup the third Sunday of each month to give to EChO for those in need. We need volunteers to help in the preparation and purchase of ingredients for this worthy cause. Please contact Stephanie Harris if interested and willing to help!  
303-564-0210 or [sharris7@hotmail.com](mailto:sharris7@hotmail.com)

***Congratulations to Bob Coursen for an excellent concert held at the First United Church of Arvada on January 22nd***



## The Transfiguration Book Club

---

Monday, February 27th from 6:30—9:30 PM in the Church

The book is: *The Art of Racing in the Rain* by Garth Stein

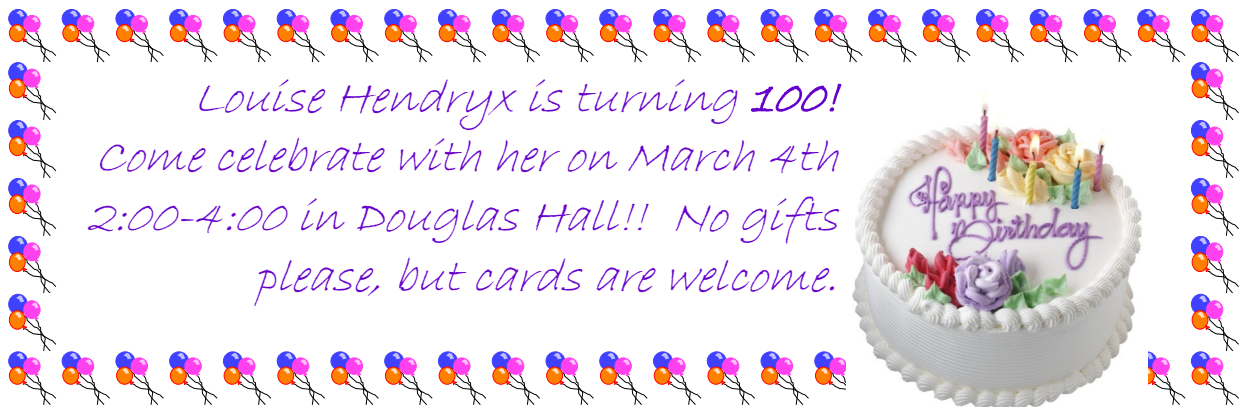
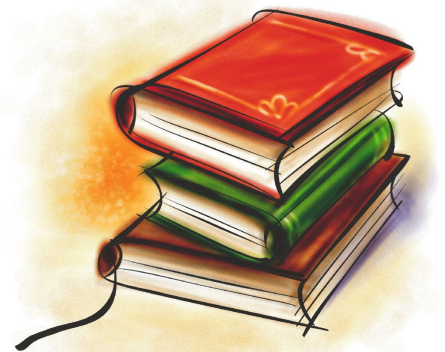
All are invited to join in on this fun and interesting group—ladies AND gentlemen!

Even if you have never come to any of the meetings before, please come.....and bring friends!

Please bring a snack and drink to share

If you have question or concerns, email  
Shelley Black—Shelley\_Black@att.biz  
Kit Snyder—snyderkit@hotmail.com

March's book will be announced soon.



### Prayers

---

#### Anointing and Healing Prayers

Anointing and healing prayers are offered by Father Mark and the Daughters of the King during the 10:15 service on the last Sunday of each month. All are welcome to come to the front of the church after communion for this special offering. This month the prayers will be on February 26th.

#### Morning Prayer Service

sponsored by the Daughters of the King is offered on Wednesday mornings at 8:00 AM in the church. Everyone is invited to attend. Please feel free to walk the Labyrinth after.

#### Evening Prayer Service

also sponsored by the Daughters of the King is offered on the second and fourth Mondays of each month at 5:30 pm in the Chapel of St. Mary and St. Joseph. The next Evening Prayer services will be February 13th and 27th.

# HAPPENINGS

## Snow Sculpture Contest

February 3 & 4

Contact Ellen O'Connor for information

eoconnor@eprd.co or 720-880-1212



## ***AN EVENING WITH COLCANNON – THE EVERGREEN CHORALE***

***ENJOY AN EVENING OF IRISH CELTIC MUSIC AT ITS FINEST  
WITH THE AWARD-WINNING MUSICIANS OF COLCANNON.***

***FOR INFORMATION AND TICKETS, VISIT  
WWW.EVERGREENCHORALE.ORG OR CALL***

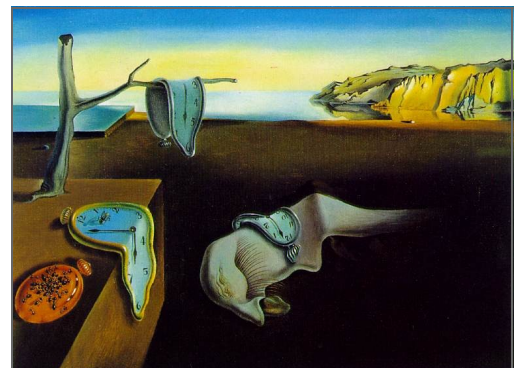
***303-674-4002***

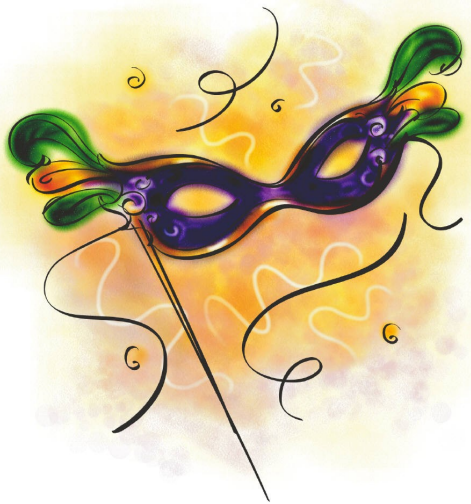
## **DALI ON TOUR**

**A TRAVELING EXHIBITION ON  
LOAN FROM THE DALI MUSEUM IN  
ST. PETERSBURG, FLORIDA**

**JANUARY 27-MARCH 1**

**CENTER FOR THE ARTS EVERGREEN**





*Pancake Supper and  
Mardi Gras*

*Pinata and King's  
Cake*

*February 21 5:30-  
7:00*

*This is a great time for fun and  
fellowship!!!*

*Pancakes and sausage, beverages  
served.*



**"DO YOU HEAR  
VOICES?"**

**"WHAT DOES IT  
TAKE TO MAKE  
UP A "CALL"?  
WHO OPENS THE  
DOOR FOR YOU?  
WHEN? WHERE?"**

**Intrigued?! Check out Fr. Mark's  
sermons on the COT website!**

**Evergreen  
Christian  
Outreach**

Needs List-February 2012



- |                         |                               |                       |
|-------------------------|-------------------------------|-----------------------|
| Sugar                   | Toothpaste                    |                       |
| Instant Mashed Potatoes | Boxed Pasta                   |                       |
| Canned Pork & Beans     | Spaghetti's                   |                       |
| Spaghetti Sauce         | Paper Products                |                       |
| Canned Chili & Stew     | Canned fruit (esp. pineapple) | Cold Cereal           |
| Laundry Detergent       | Tooth Brushes                 | Bath Soap & Deodorant |
| Dish Soap               | Canned Meats                  | Shampoo/Conditioner   |

Other Items for St. Raphael's House\*

- Winter outdoor living equipment: tent, sleeping bags, camping gear, wool
- |                                 |  |
|---------------------------------|--|
| **Children's Coats              | Sweaters                                   |
| **New Underwear & Socks for all | Area Rugs                                  |
| **Snow Pants—Adult and Children | **Women's Snow Boots                       |
| Men's Work & Snow Boots         | King & Queen bedding                       |
| Men's Shoes                     | ** Clean Winter Clothing for All           |
| **Men's Jeans                   | Bath towels                                |
| Space Heaters                   | Kitchen gadgets & silverware (can openers) |
| Pots & Pans                     | Drinking Glasses                           |

**\*Donations appreciated during regular business hours only! We no longer accept donations after hours due to fire and safety requirements. Thank you for your cooperation and your donations.**

**Volunteers Always Needed!**

Call: 303-670-1796

Evergreen Christian Outreach

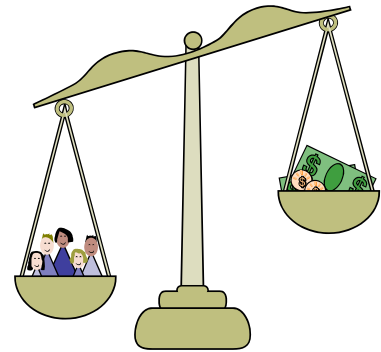
P.O. Box 1515

Evergreen, CO 80437

## News from your Treasurer—Bill Braun

### COT Bank Checking Account (includes all funds (General Fund, EDS, Property Fund, Restricted Fund)

Dec 2010 \$38,707.14  
Jan 2011 \$44,604.46  
Feb 2011 \$36,502.19  
Mar 2011 \$24,989.44  
Apr 2011 \$26,154.44  
May 2011 \$26,807.55  
June 2011 \$26,313.89  
July 2011 \$21,614.28  
August 2011 \$23,035.05  
September 2011 \$25,566.92  
October 2011 \$25,987.65  
November 2011 \$24,077.82  
December 2011 \$33,113.19  
Net -\$5,593.95



### General Fund (The fund that pays the COT bills)

Dec 2010 +\$21,059.17  
Jan 2011 +\$22,719.58  
Feb 2011 +\$17,666.54  
Mar 2011 +\$9,616.54  
Apr 2011 +\$5,731.29  
May 2011 +\$4,619.64  
June 2011 +\$3766.28  
July 2011 minus \$2,981.97  
August 2011 minus \$4,731.05  
September 2011 minus \$5,429.72  
October 2011 minus 9,516.86  
November 2011 minus 11,394.17  
December 2011 + 2,141.07  
Net -\$18,918.10

**Thank you,**

*Bill Braun*  
COT Treasurer

IR-2011-116, Dec. 9, 2011

WASHINGTON — The Internal Revenue Service today issued the 2012 optional standard mileage rates used to calculate the deductible costs of operating an automobile for business, charitable, medical or moving purposes.

Beginning on Jan. 1, 2012, the standard mileage rates for the use of a car (also vans, pickups or panel trucks) will be:

- 55.5 cents per mile for business miles driven
- 23 cents per mile driven for medical or moving purposes
- 14 cents per mile driven in service of charitable organizations

The rate for business miles driven is unchanged from the mid-year adjustment that became effective on July 1, 2011. The medical and moving rate has been reduced by 0.5 cents per mile.

*Celebrate!!!*

*February Birthdays*



*February Anniversaries*

**Brian & Susan Page**

**2/3**

**Russell & Polly Boley**

**2/12**

**Karen Coriden 2/5**

**Cort Langworthy 2/8**

**David Black 2/11**

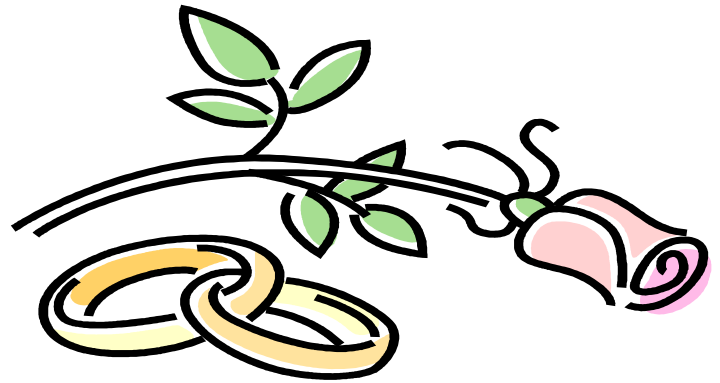
**Jamie Williams 2/13**

**Walter Hane 2/14**

**Jane Wilson 2/16**

**Barbara Houston 2/21**

**Liz Jones 2/21**



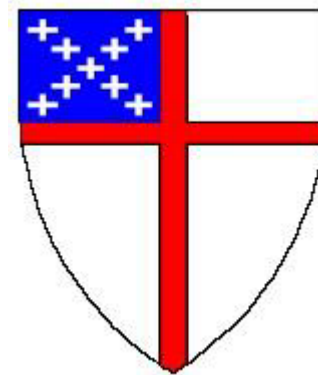
# February 2012

SUNDAY	MONDAY	TUESDAY	WEDNESDAY	THURSDAY	FRIDAY	SATURDAY
			<b>1</b> 8am Morning Prayer 9-3 EDSE 7 pm Choir 7:30 pm AA	<b>2</b> 9-3 EDSE	<b>3</b> 10 am -7 pm Kitchen Use	<b>4</b> 8 am AA
<b>5</b> 9am Combined Eucharist followed by a pot-luck brunch	<b>6</b> 9-3 EDSE 5:30—Evening Prayer	<b>7</b> 9-3 EDSE	<b>8</b> 8am Morning Prayer 9-3 EDSE 7 pm Choir 7:30 pm AA	<b>9</b> 9-3 EDSE	<b>10</b> 10 am -7 pm Kitchen Use	<b>11</b> 8 am AA 9 am Lectio Divina
<b>12</b> 8 am Holy Eucharist 10:15 am Holy Eucharist	<b>13</b> 9-3 EDSE 4-5 Property Committee	<b>14 Valentine's Day</b> 9-3 EDSE 7-10 Board Meeting	<b>15</b> 8am Morning Prayer 9-3 EDSE 9-12—EChO 7 pm Choir 7:30 pm AA	<b>16</b> 9-3 EDSE	<b>17</b> 10 am -7 pm Kitchen Use	<b>18</b> 8 am AA
<b>19</b> 8 am Holy Eucharist 10:15 am Holy Eucharist	<b>20</b> 5:30 pm Evening Prayer 9-3 EDSE 6:30-9 Book Club 6:30—Vestry	<b>21 Shrove Tuesday Pancake Supper</b> 6-9 pm Friendship Bridge 9-3 EDSE	<b>22</b> Ash Wednesday Services 10 AM, 7 PM 8am Morning Prayer 9-3 EDSE 7:30 pm AA	<b>23</b> 9-3 EDSE 7 pm Choir—please check with Bob Coursen	<b>24</b> 10 am -7 pm Kitchen Use	<b>25</b> 8 am AA
<b>26</b> 8 am Holy Eucharist 10:15 am Holy Eucharist with Healing Prayers	<b>27</b> 9-3 EDSE 5:30—Evening Prayer	<b>28</b> 9-3 EDSE	<b>29</b>			Church Douglas Hall St. Mark's Meadow Chapel

**THE CHURCH OF THE  
TRANSFIGURATION**

P.O. Box 1630  
27640 Highway 74  
Evergreen, Colorado 80437

Phone: 303-674-4904  
Fax: 303-674-1793  
E-mail: cotransfig@gmail.com



We're on the Web!  
[www.church-transfig.net](http://www.church-transfig.net)

## Newsletter Submissions

Please contact Stephanie Harris with ideas, suggestions and monthly reports for the newsletter. Monthly reports to be submitted **no later than the 22nd** of each month.

sharris7@hotmail.com

sh1161@gates.com

303-564-  
0210



**Have something to add to the newsletter?!?!  
Please contact Stephanie (see contact information to the left).**

**Upcoming ideas for pages: recipe exchange,  
community coupons, trivia and games**

**ALL IDEAS WELCOME AND  
ENCOURAGED!!!**